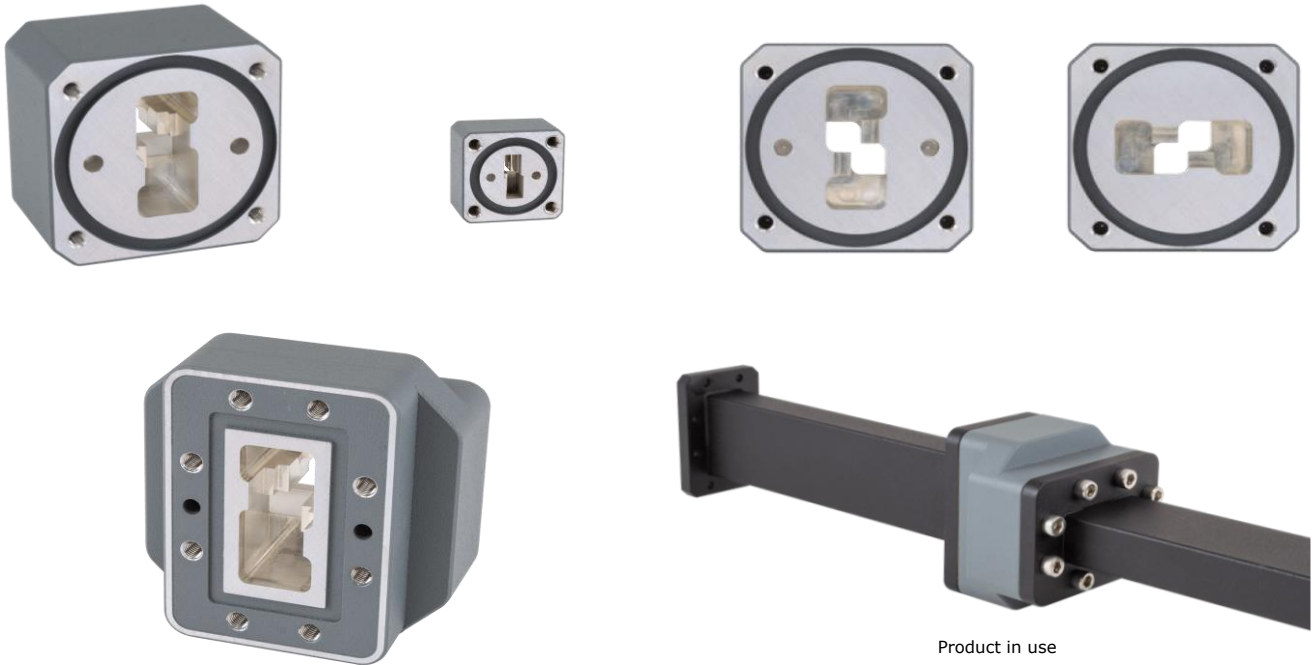


flexiguide

Overview - Super Twists

90° Waveguide Twists (Super-Twists) - lightweight, ultra compact design with optimised electrical performance. Supplied with a hardwearing powder coat finish and suitable for outdoor use.



Part Number	Waveguide Designation			Flange Type	Frequency Range GHz	Return Loss dB	Insertion Loss dB	Length mm	Hole Thread Size
	WG	WR	R						
ST14CC-90-P-*	14	137	70	14C (CPR 137G)	5.85 - 8.20	29.4	0.1 dB	38.0	10-32 UNF
ST14HH-90-P-*	14	137	70	14H (PDR 70)	5.85 - 8.20	29.4	0.1 dB	38.0	M5
ST15CC-90-P-*	15	112	84	15C (CPR 112G)	7.05 - 10.0	27.3	0.1 dB	31.5	8-32 UNC
ST15HH-90-P-*	15	112	84	15H (PDR 84)	7.05 - 10.0	27.3	0.1 dB	31.5	M4
ST15KK-90-P-*	15	112	84	15K (PBR 84)	7.05 - 10.0	27.3	0.1 dB	31.5	M4
ST15YY-90-P-*	15	112	84	15Y (UG 51/U + Groove)	7.05 - 10.0	27.3	0.1 dB	31.5	8-32 UNC
ST16CC-90-P-*	16	90	100	16C (CPR 90G)	8.20 - 12.4	27.3	0.1 dB	28.6	8-32 UNC
ST16HH-90-P-*	16	90	100	16H (PDR 100)	8.20 - 12.4	27.3	0.1 dB	28.6	M4
ST16KK-90-P-*	16	90	100	16K (PBR 100)	8.20 - 12.4	27.3	0.1 dB	28.6	M4
ST16YY-90-P-*	16	90	100	16Y (UG 39/U + Groove)	8.20 - 12.4	27.3	0.1 dB	28.6	8-32 UNC
ST17HH-90-P-*	17	75	120	17H (PDR 120)	10.0 - 15.0	27.3	0.1 dB	23.3	M4
ST17KK-90-P-*	17	75	120	17K (PBR 120)	10.0 - 15.0	27.3	0.1 dB	23.3	M4
ST17YY-90-P-*	17	75	120	17Y (UG Cover + Groove)	10.0 - 15.0	27.3	0.1 dB	23.3	6-32 UNC
ST18KK-90-P-*	18	62	140	18K (PBR 140)	12.4 - 18.0	26.4	0.1 dB	19.4	M4
ST18YY-90-P-*	18	62	140	18Y (UG 419/U + Groove)	12.4 - 18.0	26.4	0.1 dB	19.4	6-32 UNC
ST20KK-90-P-*	20	42	220	20K (PBR 220)	17.7 - 26.5	23.1	0.15 dB	13.7	M3

Part Number	Waveguide Designation			Flange Type	Frequency Range GHz	Return Loss dB	Insertion Loss dB	Length mm	Hole Thread Size
	WG	WR	R						
ST20YY-90-P-*	20	42	220	20Y (UG 595/U + Groove)	17.7 - 26.5	23.1	0.15 dB	13.7	4-40 UNC
ST22KK-90-P-*	22	28	320	22K (PBR 320)	26.5 - 40.0	23.1	0.2 dB	T.B.A.	M3
ST22YY-90-P-*	22	28	320	22Y (UG 599/U + Groove)	26.5 - 40.0	23.1	0.2 dB	T.B.A.	4-40 UNC

* Powder Coat Paint Finish:
 G = Grey (RAL 7012) - standard
 B = Black - optional extra
 W = White - optional extra

Mechanical Specifications

Material / Finish:

Aluminium / Passivation

Environmental Performance

Temperature Range:

-70 to +140°C

ETSI Class:

ETSI EN 300-019-2-4 Class 4.1

I.P. Rating:

IP65 (Weatherproof)